

## data sheet

### P2000 single engine two battery bank split charge system

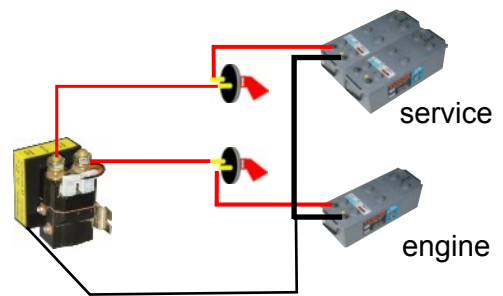
**12 volt** .... P2000      part number .... 12000-000      continuous ..... 100 amp @ 50 mV  
 engine start ..... 250 amp intermittent  
 surge ..... 500 amp

**12 volt** .... P2030      part number .... 12030-000      continuous ..... 200 amp @ 40 mV / contact / 100 A  
**24 volt** .... P2040      part number .... 12040-000      engine start ..... 400 amp intermittent  
 surge ..... 800 amp

**operation** ..... bi-directional split charge, standard  
 connect voltage ..... 13.8V  
 drop-out voltage ..... 13.0V  
 adjustment ..... contactor engagement and drop out  
 protection ..... waterproof to IP66  
 emergency link start ... includes button to engage link start timed period.

**system protection** . . 3 internal PTC fuses, auto re-set

size / weight .....70 x 60 x 100 mm / 400 gms  
 70 x 60 x 100 mm / 500 gms



### P2100 single engine three battery bank split charge system

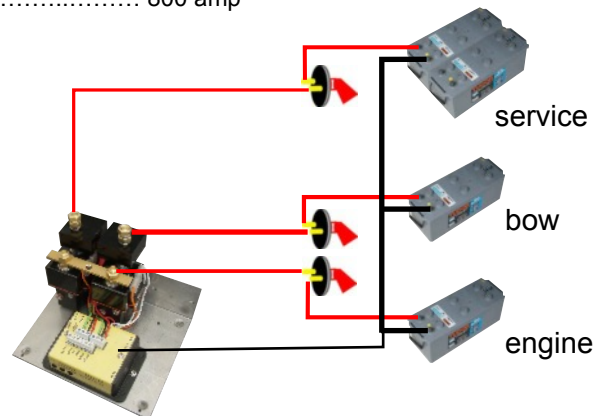
**12 volt** .... P2100      part number .... 12100-000      continuous ..... 100 amp @ 50 mV  
 engine start ..... 250 amp intermittent  
 surge ..... 500 amp

**12 volt** .... P2130      part number .... 12130-000      continuous ..... 200 amp @ 40 mV / contact / 100 A  
**24 volt** .... P2140      part number .... 120140-000      engine start ..... 400 amp intermittent  
 surge ..... 800 amp

**operation** ..... bi-directional split charge, standard  
 connect voltage ..... 13.8V / 27.6V bow battery 13.9V/27.8V  
 drop-out voltage ..... 13.0V / 26.0V  
 adjustment ..... contactor engagement and drop out  
 protection ..... waterproof to IP66  
 emergency link start ... remote button to engage link start timed period.

**system protection** . . 4 internal PTC fuses, auto re-set

size / weight .....175 x 150 x 135 mm / 1.3Kg  
 175 x 150 x 135 mm / 1.5Kg



## P2200 single engine four battery bank split charge system

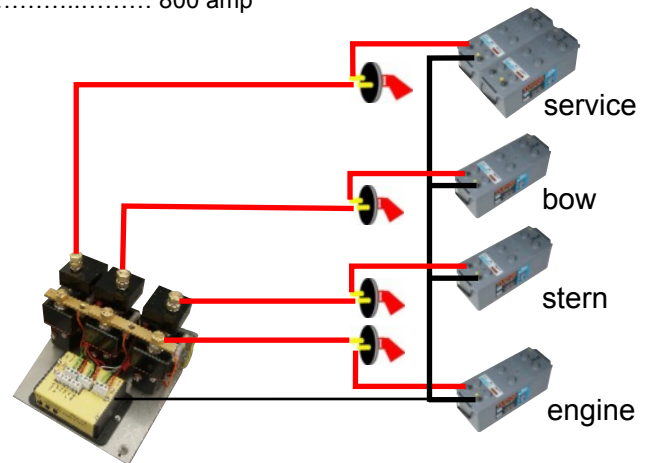
**12 volt** .... P2200      part number .... 12200-000      continuous ..... 100 amp @ 50 mV  
 engine start ..... 250 amp intermittent  
 surge ..... 500 amp

**12 volt** .... P2230      part number .... 12230-000      continuous ..... 200 amp @ 40 mV / contact / 100 A  
**24 volt** .... P2240      part number .... 12240-000      engine start ..... 400 amp intermittent  
 surge ..... 800 amp

**operation** ..... bi-directional split charge, standard  
 connect voltage ..... 13.8V 13.9 13.95 V  
 drop-out voltage ..... 13.0V  
 adjustment ..... contactor engagement and drop out  
 protection ..... waterproof to IP66  
 emergency link start ... includes button to engage link start timed period.

**system protection** . . 5 internal PTC fuses, auto re-set

size / weight .....175 x 150 x 135 mm / 1.3 Kg  
 175 x 150 x 135 mm / 1.9 Kg



## P2600 single engine, two alternator, three battery bank split charge

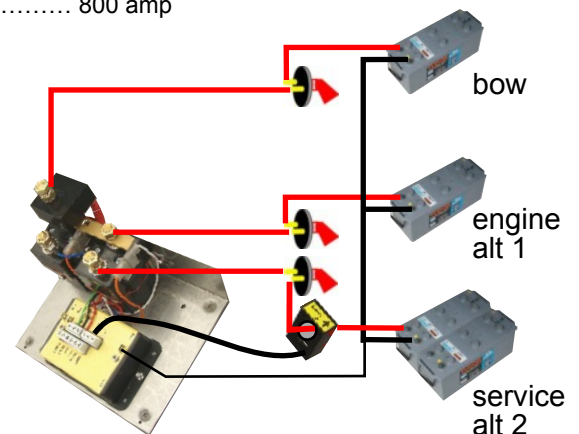
**12 volt** .... P2600      part number .... 12600-000      continuous ..... 100 amp @ 50 mV  
 engine start ..... 250 amp intermittent  
 surge ..... 500 amp

**12 volt** .... P2630      part number .... 12630-000      continuous ..... 200 amp @ 40 mV / contact / 100 A  
**24 volt** .... P2640      part number .... 12640-000      engine start ..... 400 amp intermittent  
 surge ..... 800 amp

**operation** ..... bi-directional split charge, standard  
 connect voltage ..... service constant, bow 13.8V  
 drop-out voltage ..... 13.0V  
 adjustment ..... contacts engagement and drop out  
 protection ..... waterproof to IP66  
 emergency link start ... includes button to engage link start timed period.

**system protection** . . 4 internal PTC fuses, auto re-set

size / weight ..... 175 x 150 x 135 mm / 1.3Kgs  
 175 x 150 x 135 mm / 1.5Kgs



## P2700 single engine, two alternator, four battery bank split charge

**12 volt** .... P2700 part number .... 12700-000

continuous ..... 100 amp @ 50 mV  
 engine start ..... 250 amp intermittent  
 surge ..... 500 amp

**12 volt** .... P2730 part number .... 12730-000

continuous ..... 200 amp @ 40 mV / contact / 100 A  
 engine start ..... 400 amp intermittent  
 surge ..... 800 amp

**24 volt** .... P2740 part number .... 12740-000

- operation** ..... bi-directional split charge, standard connect voltage bow .. 13.8V stern 13.9V drop-out voltage ..... 13.0V
- adjustment ..... contactor engagement and drop out protection ..... waterproof to IP66
- emergency link start ... includes button to engage link start timed period.
- system protection** . . 5 internal PTC fuses, auto re-set

size / weight ..... 175 x 140 x 135 mm / 1.5Kgs  
 175 x 140 x 135 mm / 1.9Kgs

